

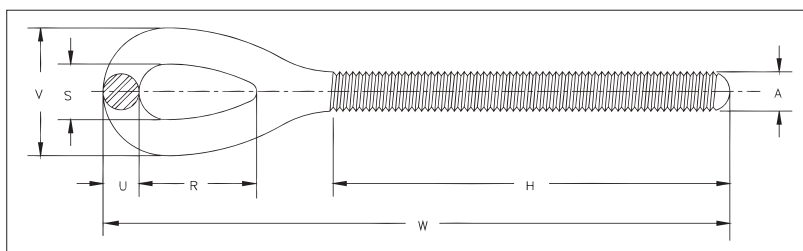


TURNBUCKLES



HG-4037

- Quenched & Tempered or normalized.
- Hot-dip Galvanized steel.
- Turnbuckle eyes are forged elongated, by design, to maximize easy attachment in system and minimize stress in the eye. For turnbuckle sizes 6 mm through 64 mm, a shackle one size smaller can be reeved through eye.
- Modified UNJ thread for improved fatigue properties.
- Fatigue rated.



HG-4037 Eye End Fittings

Shank Dia. & Take Up (in)	RH Eye Stock No.	LH Eye Stock No.	Working Load Limit (t)	Weight Each (kg)	Dimensions (mm)						
					A	H	R	S	U	V	W
* 1/4 x 4	1071057	1071672	.23	.03	6.35	65.8	20.6	8.64	5.59	19.8	106
* 5/16 x 4 1/2	1071075	1071690	.36	.06	7.94	76.2	24.1	11.2	7.11	25.4	127
* 3/8 x 6	1071093	1071716	.54	.10	9.53	98.6	28.7	13.5	8.64	30.7	155
1/2 x 6	1071119	1071734	1.00	.23	12.7	106	35.8	18.0	11.2	40.4	188
1/2 x 9	1071137	1071752	1.00	.27	12.7	145	35.8	18.0	11.2	40.4	226
1/2 x 12	1071155	1071770	1.00	.31	12.7	183	35.8	18.0	11.2	40.4	264
5/8 x 6	1071173	1071798	1.59	.37	15.9	113	45.7	22.4	12.7	47.8	212
5/8 x 9	1071191	1071814	1.59	.43	15.9	151	45.7	22.4	12.7	47.8	250
5/8 x 12	1071217	1071832	1.59	.49	15.9	189	45.7	22.4	12.7	47.8	289
3/4 x 6	1071235	1071850	2.36	.62	19.1	116	53.1	25.4	16.0	57.4	235
3/4 x 9	1071253	1071878	2.36	.70	19.1	154	53.1	25.4	16.0	57.4	273
3/4 x 12	1071271	1071896	2.36	.78	19.1	192	53.1	25.4	16.0	57.4	311
3/4 x 18	1071299	1071912	2.36	.95	19.1	268	53.1	25.4	16.0	57.4	387
7/8 x 12	1071315	1071930	3.27	1.18	22.2	198	60.5	31.8	19.1	69.9	333
7/8 x 18	1071333	1071958	3.27	1.42	22.2	275	60.5	31.8	19.1	69.9	409
1 x 6	1071351	1071976	4.54	1.43	25.4	129	76.2	36.3	22.4	81.0	279
1 x 12	1071379	1071994	4.54	1.73	25.4	205	76.2	36.3	22.4	81.0	356
1 x 18	1071397	1072010	4.54	2.03	25.4	281	76.2	36.3	22.4	81.0	432
1 x 24	1071413	1072038	4.54	2.34	25.4	357	76.2	36.3	22.4	81.0	508
1-1/4 x 12	1071431	1072056	6.89	3.21	31.8	213	91.2	46.2	28.4	103	411
1-1/4 x 18	1071459	1072074	6.89	3.68	31.8	289	91.2	46.2	28.4	103	487
1-1/4 x 24	1071477	1072092	6.89	4.15	31.8	365	91.2	46.2	28.4	103	564
1-1/2 x 12	1071495	1072118	9.71	4.68	38.1	222	104	53.8	31.8	117	441
1-1/2 x 18	1071510	1072136	9.71	5.37	38.1	298	104	53.8	31.8	117	517
1-1/2 x 24	1071538	1072154	9.71	6.05	38.1	375	104	53.8	31.8	117	594
1-3/4 x 18	1071574	1072190	12.7	7.93	44.5	309	118	60.5	38.1	137	538
1-3/4 x 24	1071592	1072216	12.7	8.85	44.5	385	118	60.5	38.1	137	614
2 x 24	1071618	1072234	16.8	13.1	50.8	396	148	68.3	44.5	157	701
2-1/2 x 24	1071636	1072252	27.2	21.0	63.5	446	165	79.2	50.8	181	752
2-3/4 x 24	1071654	1072270	34.0	27.3	69.9	449	178	82.6	57.2	197	785

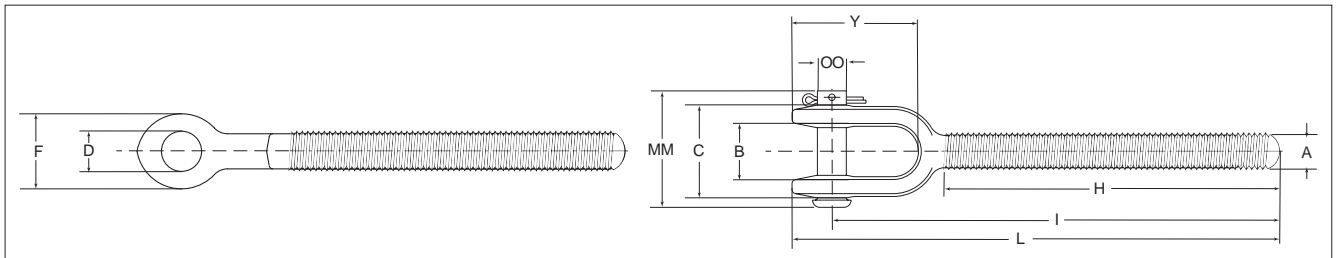
\*Mechanically galvanized



## TURNBUCKLES

### HG-4037 Jaw End Fittings

- Quenched & Tempered or normalized.
- Hot-dip galvanized steel.
- Forged jaw ends are fitted with bolts and nuts on sizes 6 mm through 16 mm, and pins and cotters on sizes 19 mm through 70 mm.
- Modified UNJ thread for improved fatigue properties.
- Fatigue Rated.



### HG-4037 Jaw End Fittings

Shank Dia. & Take Up (in)	RH Jaw Stock No.	LH Jaw Stock No.	Working Load Limit (t)	Weight Each (kg)	Dimensions (mm)										
					A	B	C	D	F	H	I Nom. Min.	L Nom. Min.	Y	MM	OO Bolt Pin
* 1/4 x 4	1072298	1072911	.23	.05	6.35	11.4	23.1	7.62	16.0	65.8	94.5	104	28.7	35.8	6.35
* 5/16 x 4 1/2	1072314	1072939	.36	.08	7.94	12.7	25.9	7.62	17.5	76.2	112	122	35.3	35.8	6.35
* 3/8 x 6	1072332	1072957	.54	.13	9.53	13.5	29.2	9.14	20.6	98.6	134	146	37.3	40.1	7.87
1/2 x 6	1072350	1072975	1.00	.25	12.7	16.3	34.5	10.7	25.4	106	165	180	46.0	47.5	9.40
1/2 x 9	1072378	1072993	1.00	.29	12.7	16.3	34.5	10.7	25.4	145	203	218	46.0	47.5	9.40
1/2 x 12	1072396	1073019	1.00	.33	12.7	16.3	34.5	10.7	25.4	183	242	256	46.0	47.5	9.40
5/8 x 6	1072412	1073037	1.59	.48	15.9	20.1	44.5	14.0	33.3	109	181	201	59.9	62.0	12.7
5/8 x 9	1072430	1073055	1.59	.54	15.9	20.1	44.5	14.0	33.3	148	219	239	59.9	62.0	12.7
5/8 x 12	1072458	1073073	1.59	.59	15.9	20.1	44.5	14.0	33.3	186	257	277	59.9	62.0	12.7
3/4 x 6	1072476	1073091	2.36	.75	19.1	24.6	53.1	17.5	41.4	116	200	225	71.4	65.0	16.0
3/4 x 9	1072494	1073117	2.36	.83	19.1	24.6	53.1	17.5	41.4	154	238	263	71.4	65.0	16.0
3/4 x 12	1072519	1073135	2.36	.92	19.1	24.6	53.1	17.5	41.4	192	276	301	71.4	65.0	16.0
3/4 x 18	1072537	1073153	2.36	1.09	19.1	24.6	53.1	17.5	41.4	268	352	377	71.4	65.0	16.0
7/8 x 12	1072555	1073171	3.27	1.31	22.2	29.5	65.0	20.6	47.8	198	297	325	82.6	78.5	19.1
7/8 x 18	1072573	1073199	3.27	1.47	22.2	29.5	65.0	20.6	47.8	275	373	402	82.6	78.5	19.1
1 x 6	1072591	1073215	4.54	1.61	25.4	34.0	70.1	23.9	53.8	129	237	269	94.7	87.4	22.4
1 x 12	1072617	1073233	4.54	1.91	25.4	34.0	70.1	23.9	53.8	205	314	345	94.7	87.4	22.4
1 x 18	1072635	1073251	4.54	2.22	25.4	34.0	70.1	23.9	53.8	281	390	421	94.7	87.4	22.4
1 x 24	1072653	1073279	4.54	2.52	25.4	34.0	70.1	23.9	53.8	357	466	498	94.7	87.4	22.4
1-1/4 x 12	1072671	1073297	6.89	3.67	31.8	46.7	94.5	30.2	66.8	213	362	401	125	115	28.7
1-1/4 x 18	1072699	1073313	6.89	4.15	31.8	46.7	94.5	30.2	66.8	289	438	477	125	115	28.7
1-1/4 x 24	1072715	1073331	6.89	4.62	31.8	46.7	94.5	30.2	66.8	365	514	553	125	115	28.7
1-1/2 x 12	1072733	1073359	9.71	5.57	38.1	52.3	106	37.3	79.2	222	383	428	134	130	35.1
1-1/2 x 18	1072751	1073377	9.71	6.26	38.1	52.3	106	37.3	79.2	298	459	504	134	130	35.1
1-1/2 x 24	1072779	1073395	9.71	6.94	38.1	52.3	106	37.3	79.2	375	535	580	134	130	35.1
1-3/4 x 18	1072813	1073439	12.7	8.57	44.5	66.0	118	43.7	88.9	309	470	523	159	152	41.4
1-3/4 x 24	1072831	1073457	12.7	9.50	44.5	66.0	118	43.7	88.9	385	546	599	159	152	41.4
2 x 24	1072859	1073475	16.8	16.0	50.8	66.5	142	53.1	106	396	605	670	185	175	50.8
2-1/2 x 24	1072877	1073493	27.2	25.3	63.5	77.7	148	60.5	143	437	650	739	230	191	57.2
2-3/4 x 24	1072895	1073518	34.0	32.8	69.9	93.7	167	73.2	155	441	679	781	243	213	69.9

\*Mechanical galvanized

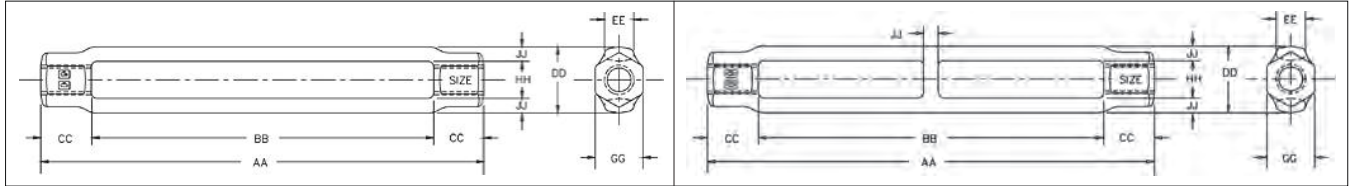
10



**HG-2510 Body**

- Heat treat by normalizing.
- Hot-dip Galvanized.
- UNC threads
- Fatigue rated.
- Meets the performance requirements of Federal Specifications FF-T-791b, Type 1, Form 1 - Class 2, except for those provisions required by the contractor.

TURNBUCKLES



**HG-2510 Body**

Shank Dia. & Take Up (in)	Stock No.	Working Load Limit (t)	Weight Each (kg)	Dimensions (mm)							
				AA	BB	CC	DD	EE	GG	HH	JJ
* 5/16 x 4-1/2	1033919	.36	.10	142	116	12.7	20.8	9.65	14.2	11.2	4.83
* 3/8 x 6	1033937	.54	.13	185	155	15.0	22.4	9.65	16.0	12.7	4.83
1/2 x 6	1033955	1.00	.32	196	153	21.1	30.2	17.3	20.6	16.0	7.11
† 1/2 x 9	1033973	1.00	.47	280	238	21.1	30.2	17.3	20.6	16.0	7.11
† 1/2 x 12	1033991	1.00	.58	356	314	21.1	30.2	17.3	20.6	16.0	7.11
5/8 x 6	1034017	1.59	.50	204	153	25.1	36.3	21.1	25.4	19.1	8.64
† 5/8 x 9	1034035	1.59	.72	289	239	25.1	36.3	21.1	25.4	19.1	8.64
† 5/8 x 12	1034053	1.59	.89	365	315	25.1	36.3	21.1	25.4	19.1	8.64
3/4 x 6	1034071	2.36	.68	210	156	26.9	44.2	23.9	28.7	23.9	10.2
† 3/4 x 9	1034099	2.36	.98	298	244	26.9	44.2	23.9	28.7	23.9	10.2
† 3/4 x 12	1034115	2.36	1.21	374	320	26.9	44.2	23.9	28.7	23.9	10.2
† 3/4 x 18	1034133	2.36	1.65	525	471	26.9	44.2	23.9	28.7	23.9	10.2
7/8 x 12	1034179	3.27	1.64	371	309	31.2	50.8	28.7	33.3	26.9	11.9
† 7/8 x 18	1034197	3.27	2.39	536	473	31.2	50.8	28.7	33.3	26.9	11.9
1 x 6	1034213	4.54	1.51	229	157	35.8	62.2	31.8	38.1	31.8	15.2
1 x 12	1034231	4.54	2.42	381	309	35.8	62.2	31.8	38.1	31.8	15.2
† 1 x 18	1034259	4.54	3.33	533	462	35.8	62.2	31.8	38.1	31.8	15.2
† 1 x 24	1034277	4.54	4.47	703	631	35.8	62.2	31.8	38.1	31.8	15.2
1-1/4 x 12	1034339	6.89	2.59	391	306	42.4	66.5	31.8	47.8	38.1	14.2
1-1/4 x 18	1034357	6.89	3.44	544	459	42.4	66.5	31.8	47.8	38.1	14.2
† 1-1/4 x 24	1034375	6.89	4.29	710	625	42.4	66.5	31.8	47.8	38.1	14.2
1-1/2 x 12	1034437	9.71	3.63	402	313	44.5	75.9	38.1	57.2	44.5	15.7
1-1/2 x 18	1034455	9.71	4.72	554	465	44.5	75.9	38.1	57.2	44.5	15.7
† 1-1/2 x 24	1034473	9.71	5.85	723	633	44.5	75.9	38.1	57.2	44.5	15.7
1-3/4 x 18	1034552	12.7	7.12	570	467	51.6	91.9	44.5	66.5	53.8	19.1
1-3/4 x 24	1034570	12.7	8.71	722	619	51.6	91.9	44.5	66.5	53.8	19.1
2 x 24	1034632	16.8	11.7	740	622	58.9	105	50.8	76.2	60.5	22.4
2-1/2 x 24	1034678	27.2	25.4	804	625	89.7	143	69.9	98.6	79.3	31.8
2-3/4 x 24	1034696	34.0	24.5	804	626	88.9	143	69.9	98.6	114	31.8

\*Mechanically galvanized

†Contains Center Rib for additional body support